



Overview, **Fluke Biomedical Power Systems Group**

Prepared for:

AMUG, May, 2010

Fluke Biomedical, **Power Systems Group**, is a leading provider of products, services, and technology for the nuclear power industry. Fluke Biomedical is owned by the FLUKE Corporation, a world leader in the manufacture, distribution and service of electronic test instrumentation and software with operations on five continents.

- 1928, Jack Victoreen formed the **Victoreen Instrument Company**
- 1998 **Victoreen** and Keithley Radiation Measurements were Acquired by Lafayette Pharmaceutical and consolidated into **Inovision**
- 2001 Inovision was Acquired by **Syncor International**
- 2002 Syncor International was Acquired by **Cardinal Health**
- **2004 Fluke Biomedical** Acquired **Radiation Management Services Group** from **Cardinal Health**



Cleveland, Ohio

- 40,000 sq. ft. climate controlled
- Licensed to handle radioactive materials
- Self-contained, fully automated Radiation Calibration Lab with 3'-4' thick, high density concrete wall construction
- NUPIC approved 10CFR50 Appendix B QA program
- ISO 9001:2000, ISO 13485, EN46001, FDA, CNSC, NAVLAP, NIST approved

- We specialize in Radiation Measurement, Detector Calibration and Monitor Qualification.
- Our customers demand proven solutions for Nuclear Power Plant applications.
- Internet access:

www.flukebiomedical.com/rms

The **Victoreen**® brand is known and trusted world-wide

Victoreen Brand Quality/Reliability

Victoreen Survey Meters

- Advanced Survey Meter
- Pressurized μ R Ion Chamber Survey Meter and non-pressurized meter with a Beta Slide

Victoreen Area Monitors, G-M and Ion Chamber

- Universal Digital Ratemeters
- Digital Smart Detector Area Monitor

Victoreen Process Monitors, Beta and Gamma,

- Offline, In-line, Adjacent-to-line Liquid and Airborne PIG+A Monitors



Customer Focus Areas, Nuclear Power Plant
Radiation Monitoring Systems, Serving over 100
plants in 15 countries

- Custom Engineered Solutions
- Software Development
- Seismic, Environmental and EMI qualifications
- Primary Isotopic Calibrations
- Technical Support and Field services

Victoreen™ Legacy

Fluke Biomedical adds long-term stability, resources, and continued dedication to our customers

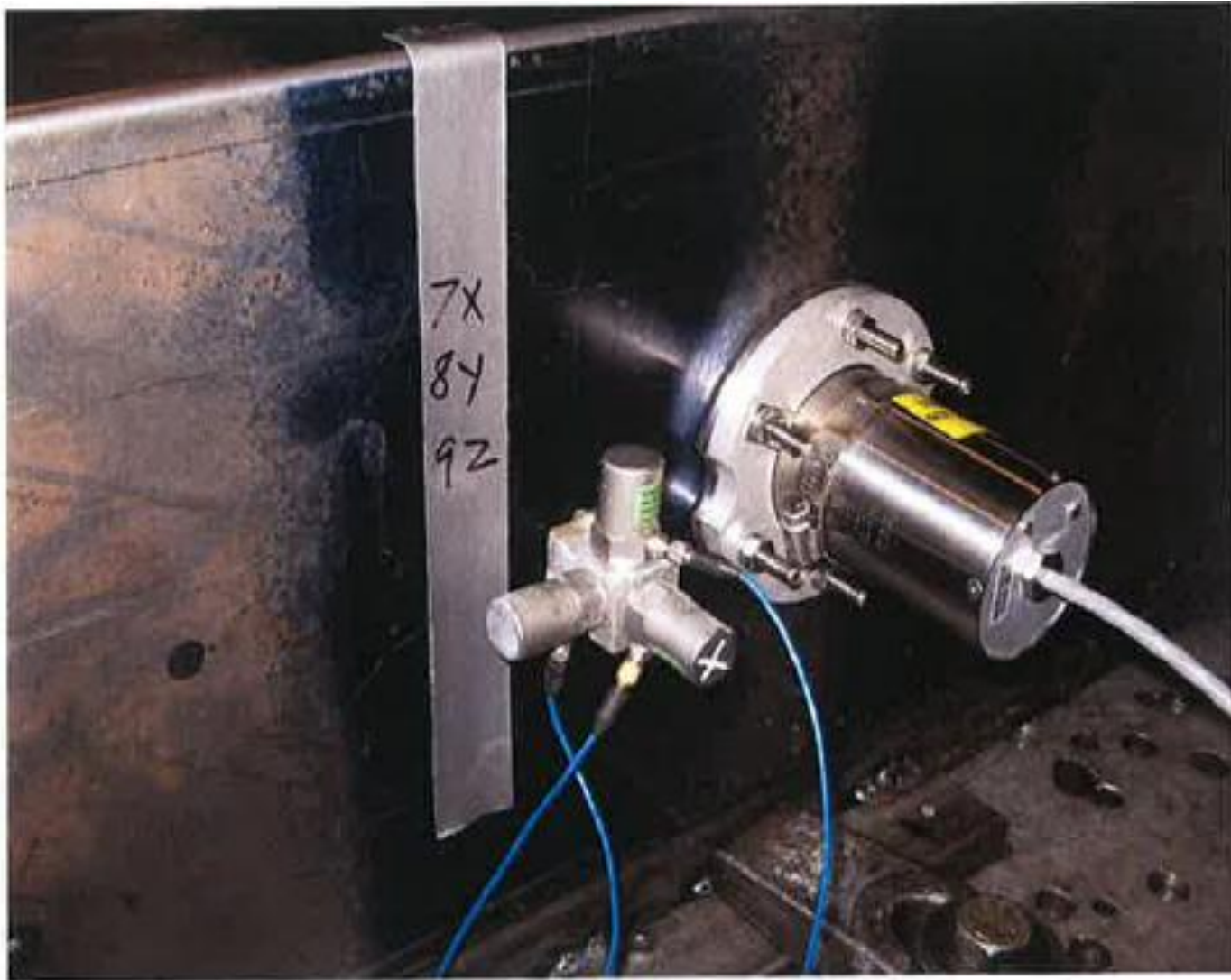
Recent Projects:

- Continue our on-going analog-to-digital Radiation Monitor upgrades
- Completed a Digital Normal and Accident Range Condenser Air Ejector Monitor Upgrade
- Completed a Digital Control Room Air Intake Monitor Upgrade
- Completed three Seismic Qualifications projects
- Began a 40+ Channel Digital Radiation Monitoring system Upgrade

- Seismic Qualified CROAI Duct Monitors under the SQURTS Program
- EPRI-SQURTS, Seismic Qualification Reporting and Testing Standardization Program
- Seismic Test performed at the Trentec, a Div. Of Curtis-Wright, facility in Cincinnati, Ohio
- 10x10 ft Triaxial Table, 8in pk-pk Displacement
- Capable of accelerating 10,000 lbs with a force of 30,000 lbs vertical and 20,000 lbs horizontal



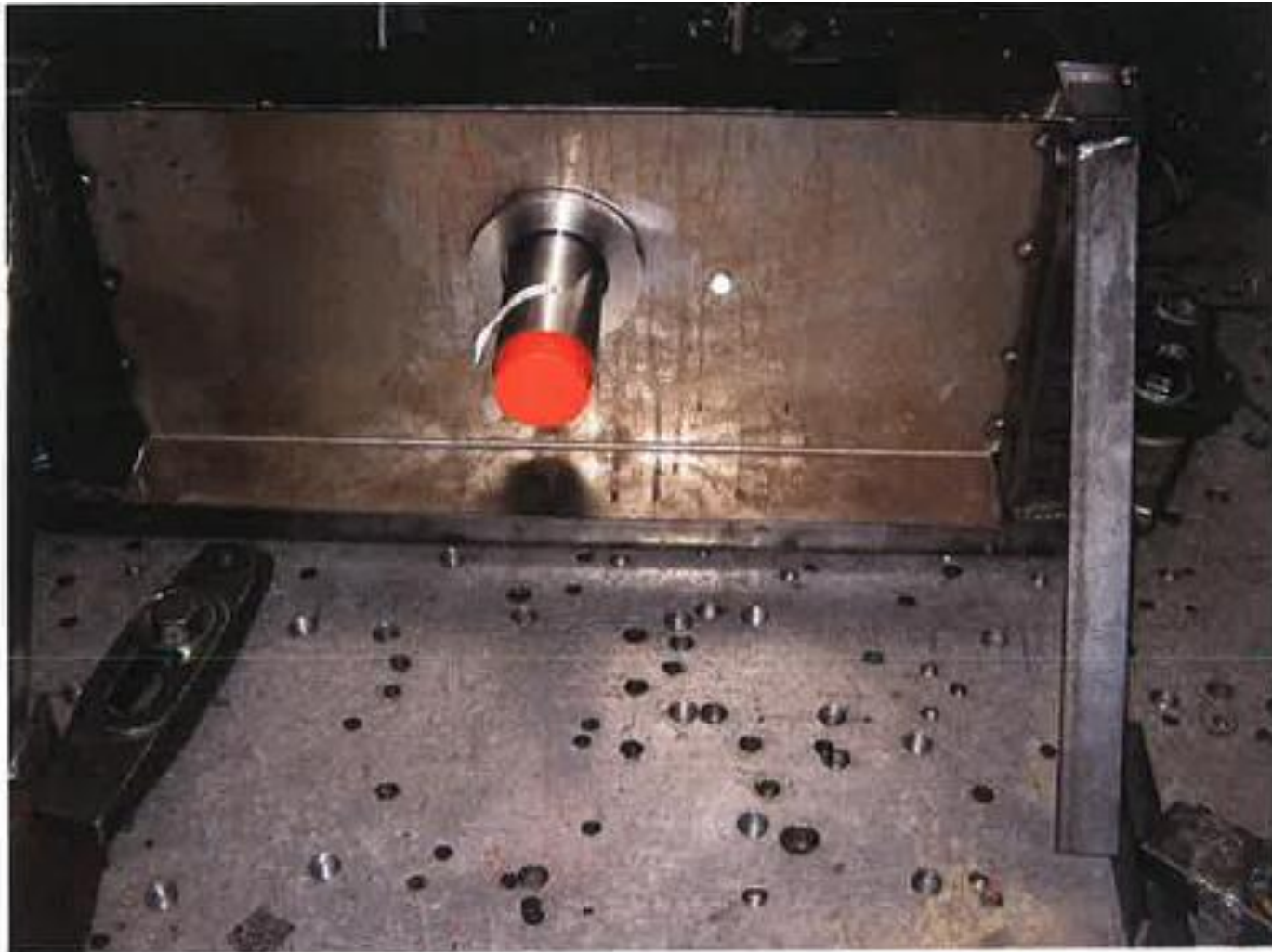
Duct Monitor Seismic Test



Duct Monitor Seismic Test

FLUKE

Biomedical



Flowmeter Seismic Test



Flowmeter Seismic Test

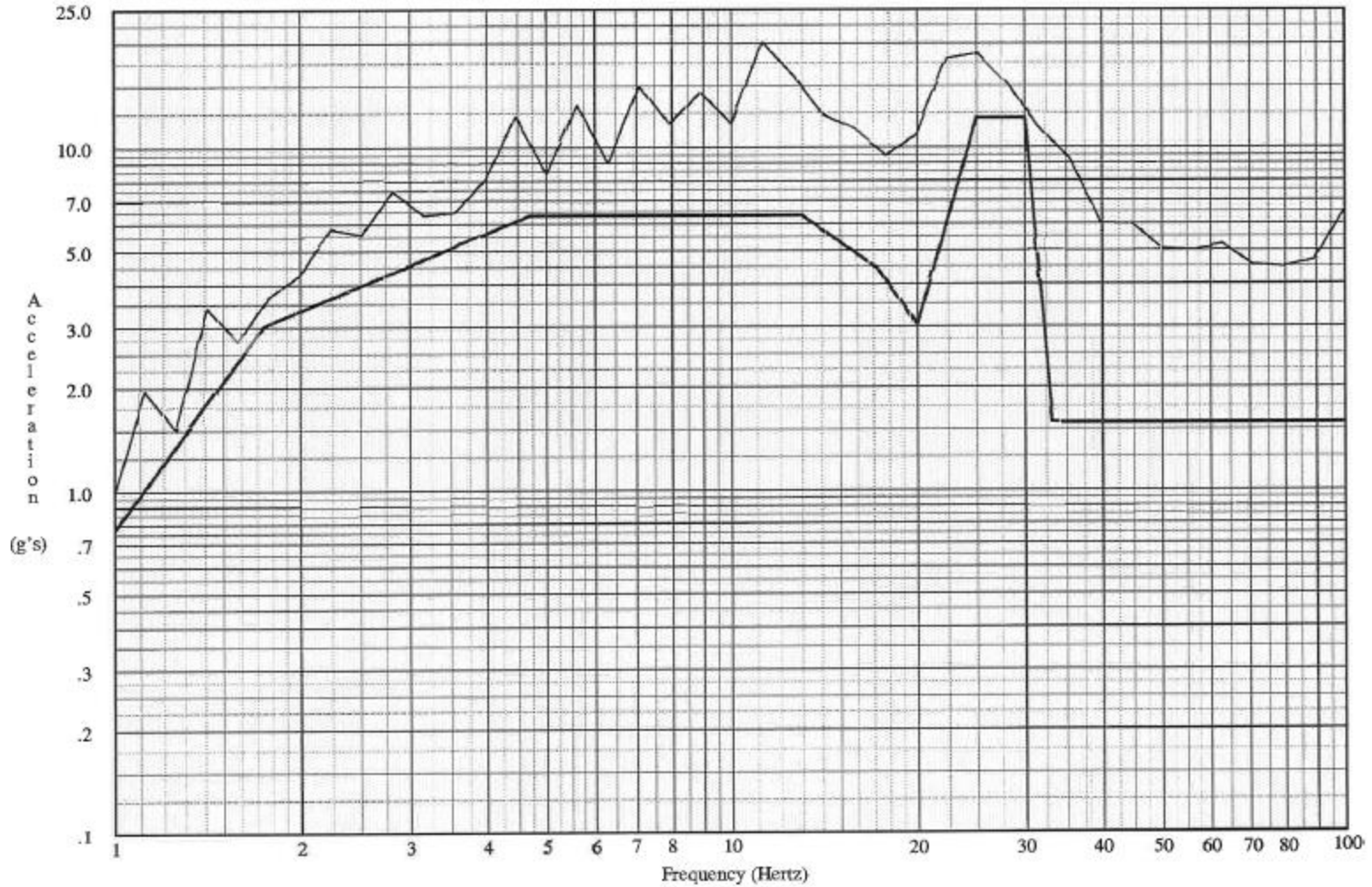




Digital Ratemeter Vertical TRS

TEST RESPONSE SPECTRA
Data File: Q9017007 12-09 3:03a
Accel No. 3 1/6 Octave ZPA: 4.21 gPk

REQUIRED RESPONSE SPECTRA
RRS File: Q9017VS.RRS 11-09 8:34p



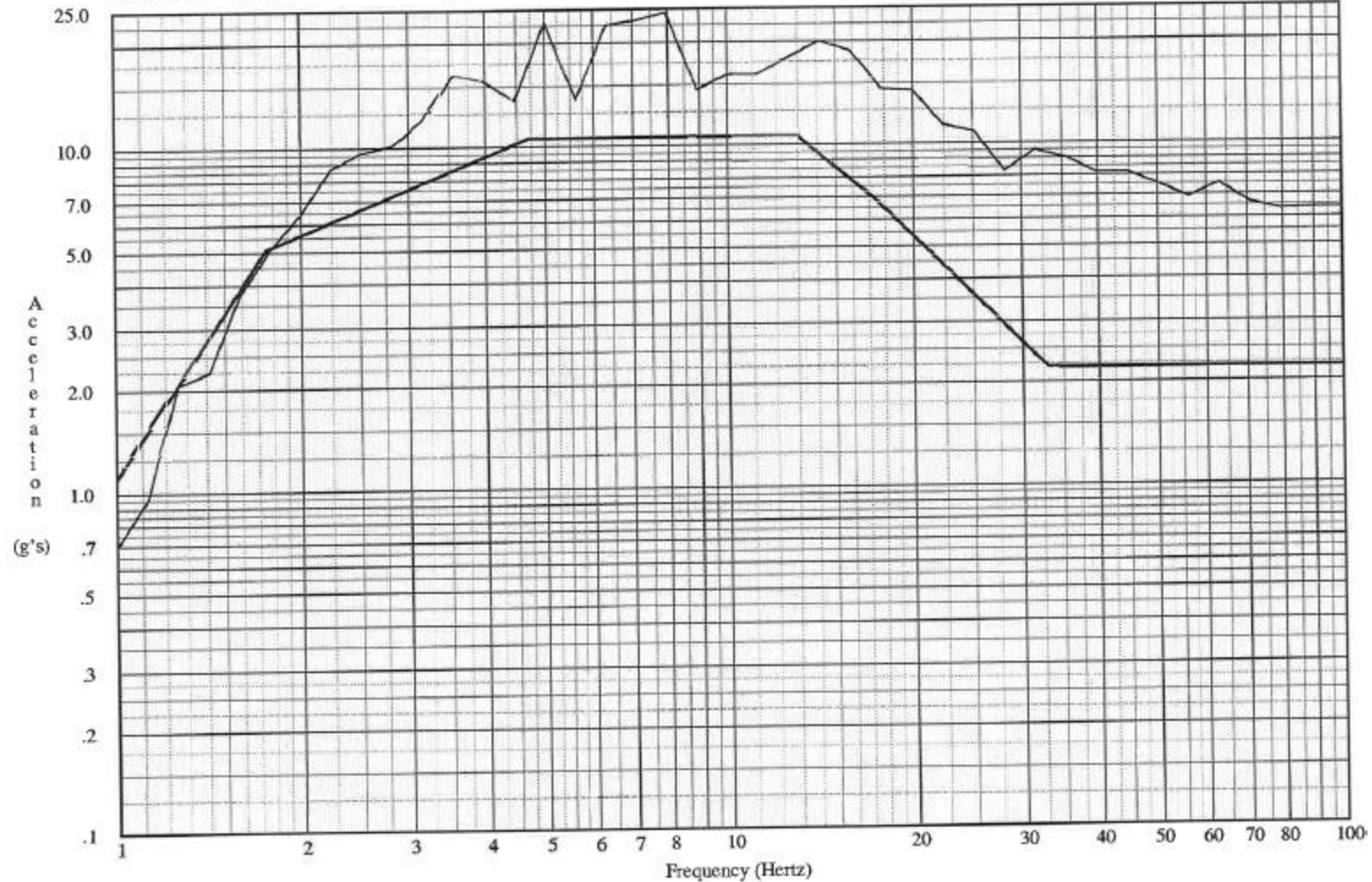
Digital Ratemeter Horizontal TRS



Biomedical

TEST RESPONSE SPECTRA
Data File: Q9017007 12-09 3:03a
Accel No. 1 1/6 Octave ZPA: 6.04 gPk

REQUIRED RESPONSE SPECTRA
RRS File: Q9017HS.RRS 11-09 8:41p



- 3,100 square feet
- 54, NIST X-Ray Techniques
- 27.5 kV Low Energy X-Ray source
- 2,000 Ci, Cs-137 Source, 850 R/hr
- 1,300 Ci, Co-60 Source, 450 R/h
- 20Ci, 4Ci and 500mCi Cs-137 Sources



- Continued Nuclear Medicine product introductions

**TNT 12000 – All in One, Zigbee Wireless X-ray Test Device;
16 photodiode detectors; Digital Signal Processing;
Max/Avg kV/kVp; 8mR/s - 5R/sec; 6x4.5x1.75in Size**



- Continued customer support with an enhanced, 3d generation Digital Ratemeter for Power plant Application
- Expanded Global Calibration Lab Automation
- Expanded Biomedical, Fluke and Tektronics Equipment Test and Calibration Services



Thank You